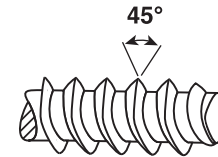
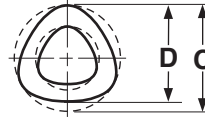
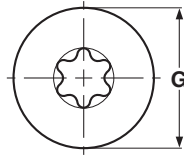
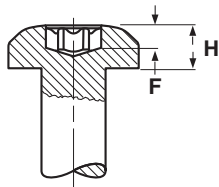


METRIC FASTENERS

THREAD FORMING SCREWS Pan Hd Six-Lobe Plastite® / Plas-Fix®-45 Alternatives



PAN SIX-LOBE PLASTITE® PLAS-FIX® 45° ALTERNATIVE THREAD ROLLING SCREWS													
Nominal Screw Size	G		T		F	Driver Size	C		D		Minimum Out-Of-Round	Recommended Pilot Hole Sizes	
	Head Diameter		Head Height		Recess Depth		Diameter of Circumscribing Circle		Measurements Across Center			Min	Max
	Max	Min	Max	Min	Min		Max	Min	Max	Min		Max	
M2.5	4.00	3.70	1.60	1.46	0.64	T6	2.55	2.41	2.5	2.37	.05	1.85	2.05
M3	5.00	4.70	1.95	1.81	0.76	T8	3.05	2.92	3	2.87	.05	2.30	2.50
M3.5	6.00	5.70	2.30	2.16	0.89	T10	3.55	3.42	3.5	3.34	.08	2.75	3.00
M4	7.00	6.61	2.45	2.31	1.14	T15	4.06	3.89	4	3.79	.10	3.20	3.45
M5	8.00	7.64	2.80	2.66	1.40	T20	5.06	4.89	5	4.79	.10	3.70	4.10
Tolerance on Length							M2 thru M5, up to 20mm: ±0.8		M2 thru M5, Over 20mm: ±1.3				

Description	Trilobular thread-rolling screw with extra wide spacing between 45° profile threads and a single lead thread that extends from the blunt point. Head is gently rounded with a hexlobular recess for driving the screw.
Applications/Advantages	Thermoplastics, engineering resins and certain thermosets. Sharper thread profile increases holding strength while reducing material displacement. Drive and strip torques are higher, reducing the need for inserts or reinforcing clips.
Material	<i>Steel</i> AISI 1022 steel
Heat Treatment	Screws shall be quenched in liquid and then tempered by reheating to 650°F minimum.
Case Hardness	HV 450 minimum
Case Depth	<i>M2 thru M3.5 diameters:</i> 0.05 - 0.18 mm <i>M4 & M5 diameters:</i> 0.10 - 0.25 mm
Core Hardness (after tempering)	HV 250 - 380
Plating	Screws have a RoHS-compliant zinc finish.

Plastite® is a registered trademark of REMINC. Kanebridge's screws are not authorized or made by licensed REMINC manufacturers. Plas-Fix® is a registered trademark of Lancaster Fasteners Co. Ltd.. Kanebridge's screws are not authorized or made by licensed Lancaster Fastener manufacturers.

This page prints with a watermark