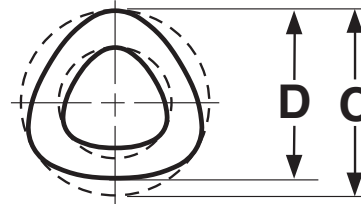
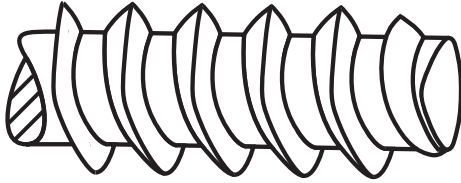


SELF- TAPPING SCREWS

**THREAD ROLLING** **Plastite®**  
**48-2**



PLASTITE® 48-2 THREAD ROLLING SCREWS							REMINC®
Nominal Screw Size and Threads Per Inch	C		D		Minimum Out-Of-Round	Recommended Pilot Hole Sizes	
	Diameter of Circumscribing Circle		Measurements Across Center			Soft Ductile Materials	Brittle Materials
	Max	Min	Max	Min			
• 0 - 40	.0665	.0635	.0635	.0605	.002	.0498	.0490
2 - 28	.092	.086	.089	.083	.002	.076	.080
3 - 24	.110	.104	.106	.100	.002	.088	.094
4 - 20	.127	.121	.123	.117	.002	.100	.106
• 5 - 20	.136	.132	.133	.129	.002	-	-
6 - 19	.147	.141	.143	.137	.003	.122	.128
7 - 18	.166	.160	.160	.154	.004	.134	.142
8 - 16	.185	.179	.179	.173	.004	.149	.158
9 - 15	.199	.193	.193	.187	.004	.162	.172
10 - 14	.212	.206	.208	.202	.004	.175	.185
12 - 11	.232	.226	.226	.220	.005	.195	.205
1/4 - 10	.276	.270	.268	.262	.006	.224	.240
5/16 - 9	.345	.335	.335	.325	.006	.286	.303
<b>Tolerance on Length</b>	Thru 3/4": ±.030"		Over 3/4": ±.050"		Over 1/4" Diameter, All Lengths: ±.050"		

\* Specifications for the 0-40 & 5-20 diameters are independent from the REMINC standard and are listed here for reference purposes only.

<b>Description</b>	Trilobular thread-rolling screw with extra wide spacing between 48° profile threads; twin lead threads with a 1-2 thread point taper.	
<b>Applications/ Advantages</b>	Thermoplastics, engineering resins and certain thermosets. Sharper thread profile increases holding strength while reducing material displacement. Drive and strip torques are higher, reducing the need for inserts or reinforcing clips.	
<b>Material</b>	<i>Steel</i> AISI 1022 steel	<i>Stainless</i> <b>18-8:</b> 18-8 stainless steel <b>410:</b> 410 austenitic stainless steel
<b>Heat Treatment</b>	Screws shall be quenched in liquid and then tempered by reheating to 650°F minimum.	<b>410 SS:</b> An ideal method of hardening 410 stainless screws is a bright hardening process, which typically involves a vacuum furnace. Another key factor affecting hardness is the chemistry of the fastener--most elements have maximum values but not minimums. This fact can contribute to hardness variance.  18-8 is only hardenable by cold-working.
<b>Case Hardness</b>	Rockwell C45 minimum	-
<b>Case Depth</b>	<b>No. 2 thru 6 diameters:</b> .002 - .007 <b>No. 8 thru 10 diameters:</b> .004 - .009 <b>1/4" diameter:</b> .005 - .011	-
<b>Core Hardness</b>	<u>Core:</u> Rockwell C28-38 (after tempering)	<b>18-8:</b> Rockwell B90 - C20 (approx.) <b>410:</b> Rockwell C38 - 46 (approx.)
<b>Plating</b>	Various finishes with wax coating (see Appendix-A)	Stainless thread rolling screws are supplied passivated & waxed.

\*Plastite® is a registered trademark of REMINC. Kanebridge's screws are manufactured by REMINC manufacturers.